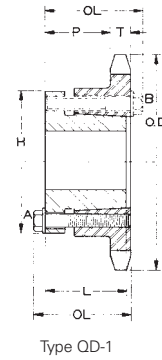


SPROCKETS FOR No. 160 .2" PITCH ANSI CHAIN

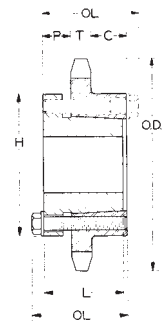
TABLE No. 1 STEEL SINGLE SPROCKETS WITH Q-D® BUSHINGS

PART No.	BUSHING	BORE RANGE	DIAMETERS		TYPE	No. TEETH	DIMENSIONS						Wt. Less BUSHING
			OUTSIDE	PITCH			T NOM.	OL	L	P	C	H	
H160E12	E	7/8 - 3 1/2"	8.66"	7.727"	QD-1	12	1.156"	3 1/16"	2.64"	1 9/16"	-	6"	13.9
H160E13	E	7/8 - 3 1/2"	9.31	8.357	QD-1	13	1.156	3 1/16	2.64	1 9/16	-	6	16.3
H160E14	E	7/8 - 3 1/2"	9.96	8.988	QD-1	14	1.156	3 1/16	2.64	1 9/16	-	6	18.5
H160F15	F	1 - 4	10.61	9.620	QD-1	15	1.156	4 13/64	3.68	2 23/32	-	6 5/8	26.3
H160F16	F	1 - 4	11.26	10.252	QD-1	16	1.156	4 13/64	3.68	2 23/32	-	6 5/8	29.3
H160F17	F	1 - 4	11.90	10.885	QD-1	17	1.156	4 13/64	3.68	2 23/32	-	6 5/8	32.5
H160F18	F	1 - 4	12.54	11.518	QD-1	18	1.156	4 13/64	3.68	2 23/32	-	6 5/8	35.8
H160F19	F	1 - 4	13.19	12.151	QD-1	19	1.156	4 13/64	3.68	2 23/32	-	6 5/8	39.4
H160F20	F	1 - 4	13.83	12.785	QD-1	20	1.156	4 13/64	3.68	2 23/32	-	6 5/8	43.1
H160F21	F	1 - 4	14.47	13.419	QD-1	21	1.156	4 13/64	3.68	2 23/32	-	6 5/8	47.0
H160F22	F	1 - 4	15.11	14.053	QD-1	22	1.156	4 13/64	3.68	2 23/32	-	6 5/8	51.2
H160F23	F	1 - 4	15.75	14.688	QD-1	23	1.156	4 13/64	3.68	2 23/32	-	6 5/8	55.5
H160F24	F	1 - 4	16.39	15.323	QD-1	24	1.156	4 13/64	3.68	2 23/32	-	6 5/8	60.0
H160F25	F	1 - 4	17.03	15.958	QD-1	25	1.156	4 13/64	3.68	2 23/32	-	6 5/8	64.7
H160J26	J	1 1/2 - 4 1/2	17.67	16.593	QD-2	26	1.156	5 3/64	4.51	1 7/16	2 1/32"	7 1/4	74.2
H160J28	J	1 1/2 - 4 1/2	18.95	17.863	QD-2	28	1.156	5 3/64	4.51	1 7/16	2 1/32	7 1/4	84.5
H160J30	J	1 1/2 - 4 1/2	20.23	19.134	QD-2	30	1.156	5 3/64	4.51	1 7/16	2 1/32	7 1/4	95.6
160J35	J	1 1/2 - 4 1/2	23.42	22.312	QD-2	35	1.156	5 3/64	4.51	1 7/16	2 1/32	7 1/4	127
160M40*	M	2 - 5 1/2	26.61	25.491	QD-3	40	1.156	7 3/8	6 3/4	3 9/32	2 7/16	9	186
160M45*	M	2 - 5 1/2	29.80	28.671	QD-3	45	1.156	7 3/8	6 3/4	3 9/32	2 7/16	9	227
160M54*	M	2 - 5 1/2	35.54	34.397	QD-3	54	1.156	7 3/8	6 3/4	3 9/32	2 7/16	9	295
160M60*	M	2 - 5 1/2	39.36	38.215	QD-3	60	1.156	7 3/8	6 3/4	3 9/32	2 7/16	9	360

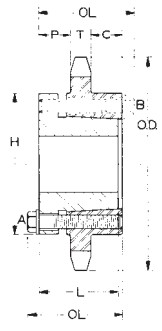
*Bushing mounts with capscrews on "B" side only.



Type QD-1



Type QD-2



Type QD-3

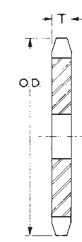
STANDARD KEYSEATS
TABLE No. 3

BORE RANGE	KEYSEAT
3/4" - 7/8"	3/16" X 3/32"
15/16 - 1 1/4	1/4 X 1/8
1 5/16 - 1 3/8	5/16 X 5/32
1 7/16 - 1 3/4	3/8 X 3/16
1 13/16 - 2 1/4	1/2 X 1/4
2 5/16 - 2 3/4	5/8 X 5/16
2 13/16 - 3 1/4	3/4 X 3/8
3 3/8 - 3 3/4	7/8 X 7/16
3 7/8 - 4 1/2	1 X 1/2
4 5/8 - 5 1/2	1 1/4 X 5/8
5 5/8 - 6 1/2	1 1/2 X 3/4

1 3/8" Bore Bushings also available with 3/8" x 3/16" Keyseat.

TABLE No. 2 TYPE "A" STEEL PLATE SPROCKETS

PART No.	OUTSIDE DIA.	PITCH DIA.	No. TEETH	STOCK BORE	T (NOM.)	Wt. Lbs.	PART No.	OUTSIDE DIA.	PITCH DIA.	No. TEETH	STOCK BORE	T (NOM.)	Wt. Lbs.
160A8	6.03"	5.226"	8	1 1/2"	1.156"	5.1	160A23	15.75"	14.688"	23	1 1/2"	1.156"	51.0
160A9	6.70	5.848	9	1 1/2"	1.156	6.8	160A24	16.39	15.323	24	1 1/2"	1.156	55.5
160A10	7.36	6.472	10	1 1/2"	1.156	8.5	160A25	17.03	15.958	25	1 1/2"	1.156	64.9
160A11	8.01	7.099	11	1 1/2"	1.156	10.5	160A26	17.67	16.593	26	1 1/2"	1.156	66.5
160A12	8.66	7.727	12	1 1/2"	1.156	12.6	160A27	18.31	17.228	27	1 1/2"	1.156	71.0
160A13	9.31	8.357	13	1 1/2"	1.156	15.3	160A28	18.95	17.863	28	1 1/2"	1.156	76.0
160A14	9.96	8.988	14	1 1/2"	1.156	17.7	160A30	20.23	19.134	30	1 1/2"	1.156	88.0
160A15	10.61	9.620	15	1 1/2"	1.156	20.7	160A35	23.42	22.312	35	1 1/2"	1.156	127
160A16	11.25	10.252	16	1 1/2"	1.156	23.9	160A40	26.61	25.491	40	1 1/2"	1.156	155
160A17	11.90	10.885	17	1 1/2"	1.156	27.0	160A45	29.80	28.671	45	1 1/2"	1.156	210
160A18	12.54	11.518	18	1 1/2"	1.156	31.3	160A54	35.54	34.397	54	1 1/2"	1.156	298
160A19	13.19	12.151	19	1 1/2"	1.156	34.6	160A60	39.36	38.215	60	1 1/2"	1.156	368
160A20	13.83	12.785	20	1 1/2"	1.156	39.3	160A70	45.73	44.578	70	1 1/2"	1.156	499
160A21	14.47	13.419	21	1 1/2"	1.156	43.1	160A80	52.10	50.943	80	1 1/2"	1.156	628
160A22	15.11	14.053	22	1 1/2"	1.156	48.4							

Hardened Teeth


Type A

