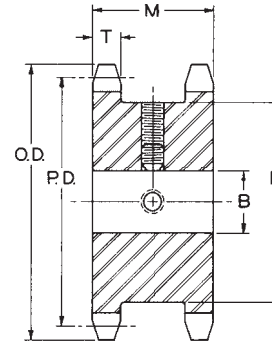


**HARDENED TEETH**

**TABLE No. 1**
**STOCK STEEL TYPE "A" DOUBLE SINGLE SPROCKETS**

PART No.	DIAMETERS			TYPE	No. TEETH	BORE "B"		DIMENSIONS		Wt. Lbs.
	O.D.	P.D.	D			STOCK	MAX.	M	T	
<b>For No.40. 1/2" Pitch Standard Single Strand Roller Chain</b>										
DS40A17	2.96"	2.721"	2 9/64"	DS-A	17	1/2"	1 7/16"	1 13/32"	.284"	2.8
DS40A19	3.28	3.038	2 15/32	DS-A	19	5/8	1 3/4	1 13/32	.284	3.4
DS40A21	3.62	3.355	2 25/32	DS-A	21	5/8	1 7/8	1 13/32	.284	4.1
<b>For No.50. 5/8" Pitch Standard Single Strand Roller Chain</b>										
DS50A17	3.72	3.401	2 11/16	DS-A	17	5/8	1 7/8	1 21/32	.343	4.1
DS50A19	4.12	3.797	3 5/32	DS-A	19	5/8	2 1/8	1 21/32	.343	5.1
DS50A21	4.52	4.194	3 1/2	DS-A	21	5/8	2 3/8	1 21/32	.343	6.3
<b>For No.60. 3/4" Pitch Standard Single Strand Roller Chain</b>										
DS60A17	4.46	4.082	3 1/4	DS-A	17	3/4	2 1/4	1 61/64	.459	6.8
DS60A19	4.95	4.557	3 23/32	DS-A	19	3/4	2 1/2	1 61/64	.459	8.5
DS60A21	5.43	5.032	4 13/64	DS-A	21	3/4	2 3/4	1 61/64	.459	10.5
<b>For No.80. 1" Pitch Standard Single Strand Roller Chain</b>										
DS80A17	5.95	5.442	4 21/64	DS-A	17	1	2 13/16	2 13/64	.575	13.8
DS80A19	6.59	6.076	4 31/32	DS-A	19	1	3 1/4	2 13/64	.575	17.4
DS80A21	7.24	6.710	5 39/64	DS-A	21	1	3 3/4	2 13/64	.575	21.4

**Browning® Stock Type "A" Double Single Sprockets are for use with two single strand chains. normally one drive chain and one driven chain as on roll case drives or live roller conveyor drives. They are made of steel and have HARDENED TEETH. They can be rebored to the maximum shown in the table which is with standard keyway and setscrew over keyway. Slightly larger bores are possible with no keyway or with setscrew at angle to keyway.**