

# PRODUCT INFORMATION PACKET

Model No: 5R018  
Catalog No: 5R018  
38 WATT Refrigeration Motor, 1550 RPM, 208-230 Volts, Unit Bearing, TEAO  
Unit Bearing Motors



Regal and Morrill Motors are trademarks of Regal Rexnord Corporation or one of its affiliated companies.  
©2021 Regal Rexnord Corporation, All Rights Reserved. MC017097E



**Nameplate Specifications**

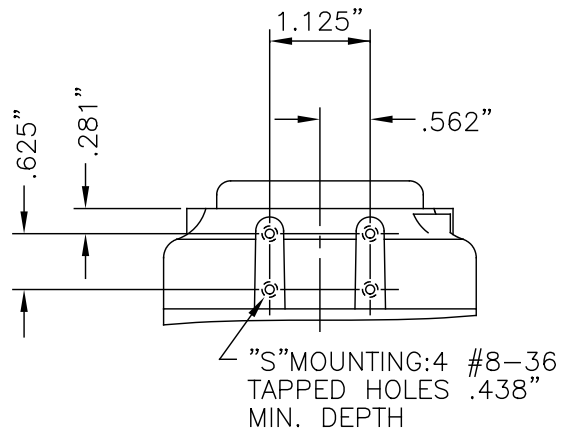
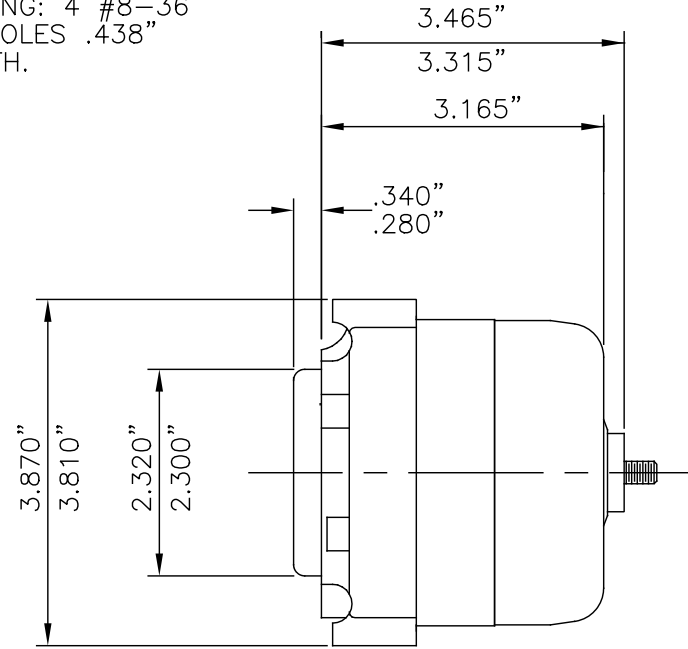
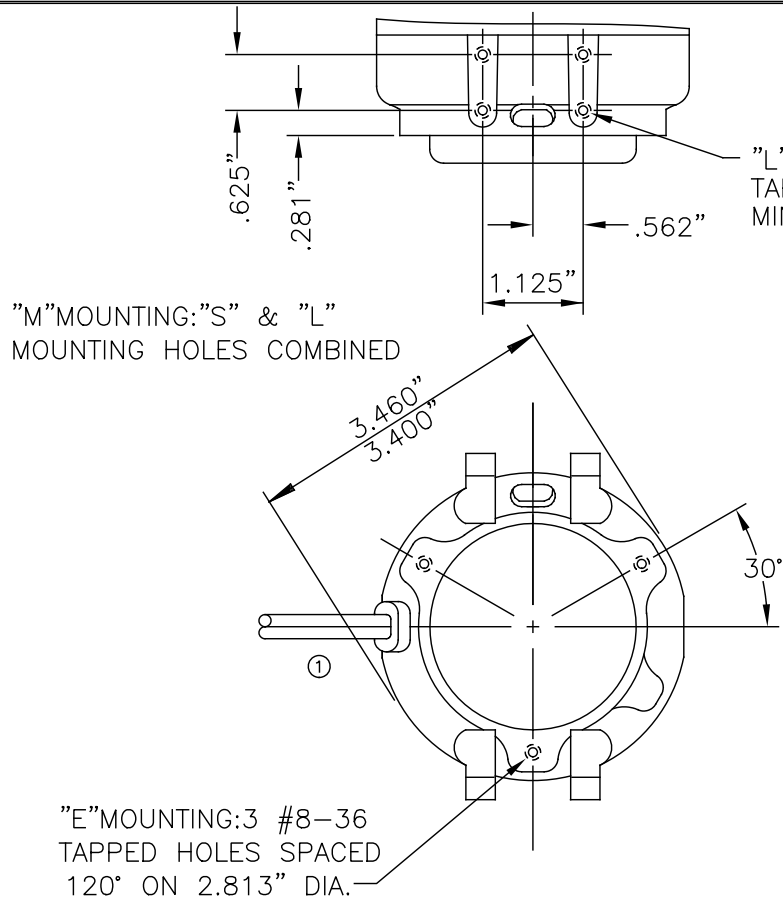
Output Watts	<b>38 W</b>	Frequency	<b>60 Hz</b>
Voltage	<b>230 V</b>	Current	<b>0.45 A</b>
Speed	<b>1550 rpm</b>	Phase	<b>1</b>
Duty	<b>Continuous Air Over</b>	Insulation Class	<b>B</b>
Frame	<b>UNIT BEARING</b>	Enclosure	<b>Totally Enclosed Air Over</b>
Thermal Protection	<b>Electronically Protected</b>	Ambient Temperature	<b>55 °C</b>
UL	<b>Yes</b>	CSA	<b>Y</b>
CE	<b>N</b>		

**Technical Specifications**

Electrical Type	<b>Electronically Commutated Motor</b>	Starting Method	<b>Across The Line</b>
Poles	<b>4</b>	Rotation	<b>Counterclockwise Opposite Shaft End</b>
Mounting	<b>2 BOSS/OSE 3 HOLES</b>	Motor Orientation	<b>Any</b>
Frame Material	<b>Cast Iron</b>	Shaft Type	<b>1/4-20 THREAD</b>
Overall Length	<b>4.14 in</b>	Frame Length	<b>3.81 in</b>
Shaft Diameter	<b>0.250 in</b>	Shaft Extension	<b>0.33 in</b>
Outline Drawing	<b>26721-Erwin</b>		

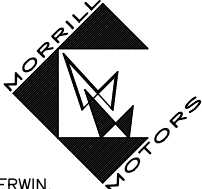
This is an uncontrolled document once printed or downloaded and is subject to change without notice. Date Created:10/11/2021

NOTE: OUTLINE DIMENSIONS FOR WHICH NO LIMIT IS SPECIFIED ARE NOMINAL AND NOT GUARANTEED AS TO TOLERANCE. ADDITIONAL INFORMATION ON TOLERANCES WILL BE FURNISHED ON SPECIFIC REQUEST.



NOTE: MOUNTING SCREW TORQUE 3.5 FT. LBS. MAX.

F:\CADFILES\VOL\_9\26721

 ERWIN, TENNESSEE	REVISIONS ① CHANGED PICTURE ON LEAD.			BY RMH	DATE 07-06-07
	②				
	③				
	④				
	⑤				
SCALE 1/2"=1"	DATE 01-22-07	DR'N RMH	CKD	AP'VD	
TITLE MOTOR OUTLINE ( SSC <sup>2</sup> FULL 1" C.I., BOSSED, EXTENDED F.C.)				NO. S-26721	